

Delray Beach Shore Protection Program

**Florida Shore and Beach Preservation Association
Annual Conference**

September 15, 2021



The City's Beach Team

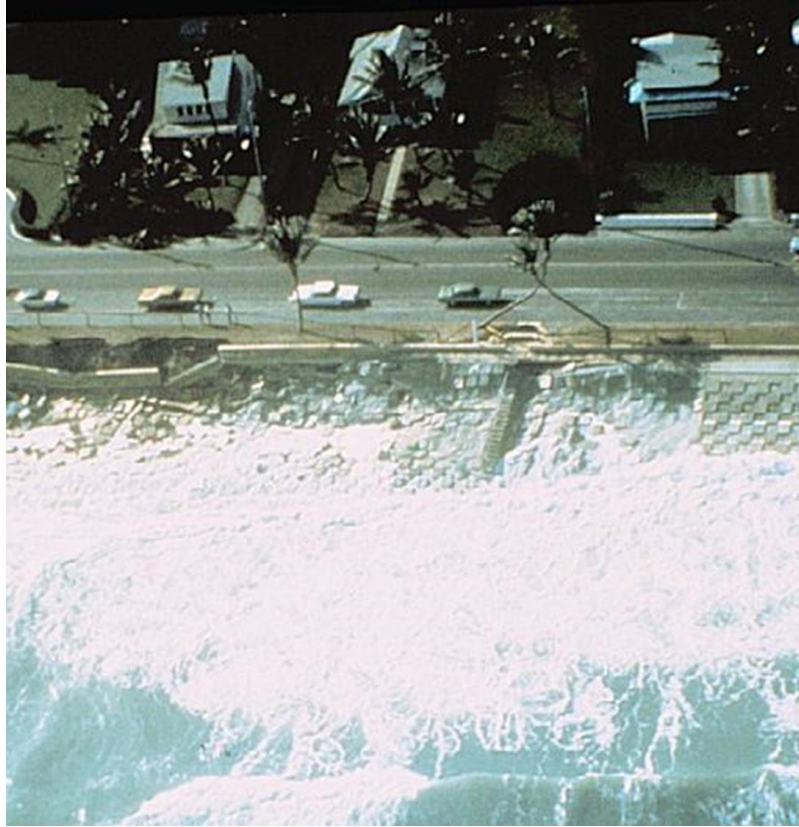
- Missie Barletto
Director of Public Works
- Cynthia Fuentes, P.E.
Assistant Director of Public Works
- Joseph Scarola
Senior Scientist, Ecological Associates Inc.
- Doris Otero, Ph.D
Project Manager, APTIM





Historical Village by the
Sea

DELRAY BEACH, FLORIDA



Beach Nourishment History





1973 **1973**



2002 **2002**



Nourishment Summary



Construction Date	Construction Volume (CY)	Project Length (Miles)
1973 Initial Nourishment	1,634,500	2.7
1978 1st Renourishment	701,300	1.7
1984 2nd Renourishment	1,311,000	2.7
1992 3rd Renourishment	1,196,500	1.7
2002 4th Renourishment	1,230,000	1.9
2005 Storm Repair	250,000	2.7
2013 5th Renourishment	1,115,300	1.9
2014 Storm Repair	381,200	1.0
2020 Storm Repair	365,000	0.8



Sea Turtle
Nesting
Monitoring

Delray's Turtle Program started in 1984

Turtle Monitoring documented 348 nests in 2020, the second highest year on record!!



Annual Sea Turtle Nests

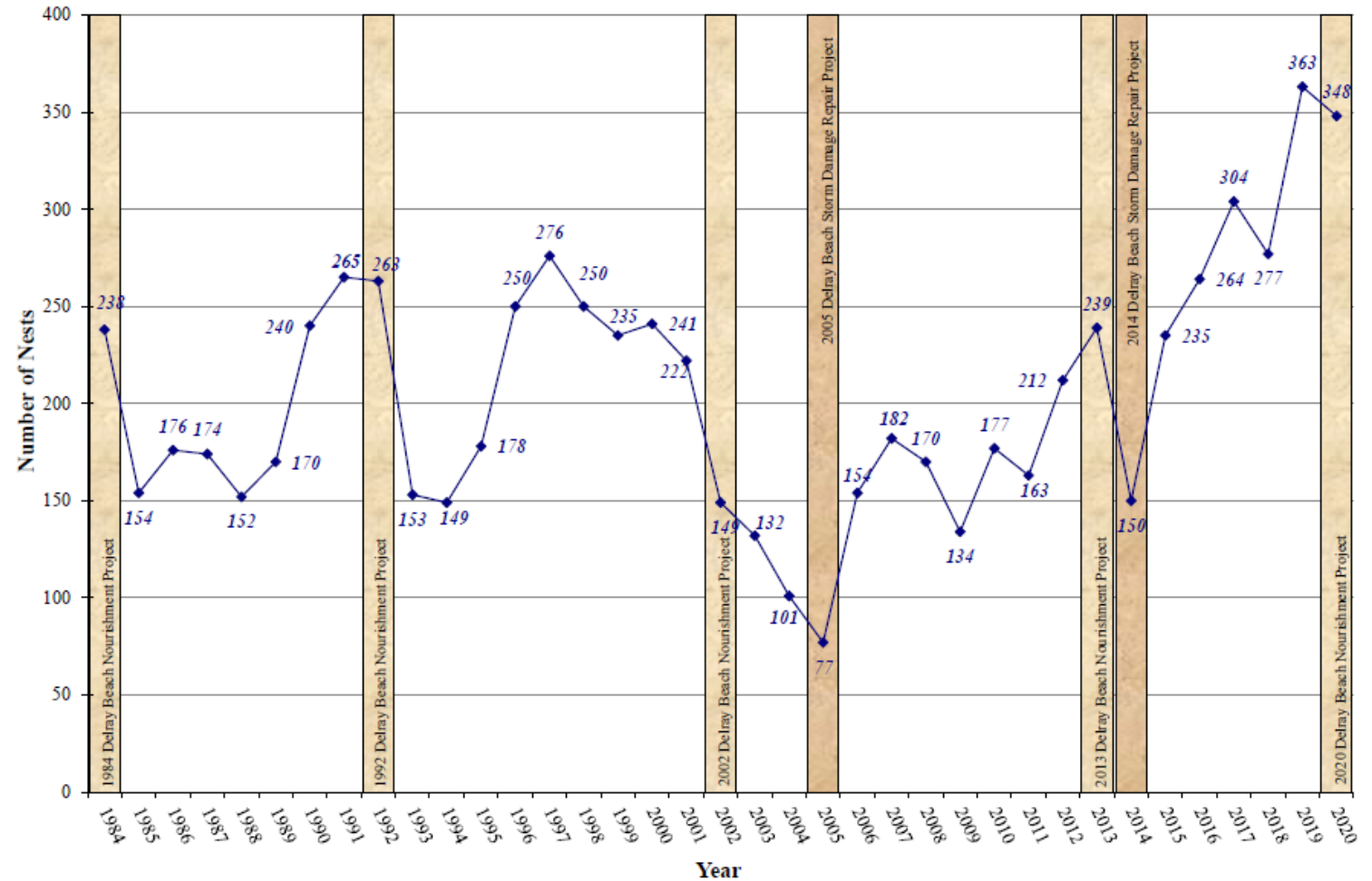



Figure 4. Annual numbers of sea turtle nests (loggerhead, green turtle, and leatherback) within the City of Delray Beach, 1984 - 2020. Data source: Ecological Associates, Inc., D.B. Ecological Services, Inc., and Dr. John Fletemeyer.


Sea Turtle Outreach

 **City of Delray Beach, Florida Government**  was live.
Friday at 8:29 AM · 

Delray Beach Sea Turtle Nest Excavation August 20, 2021



 69 9 Comments 19 Shares 1.5K Views 

 Love  Comment  Share





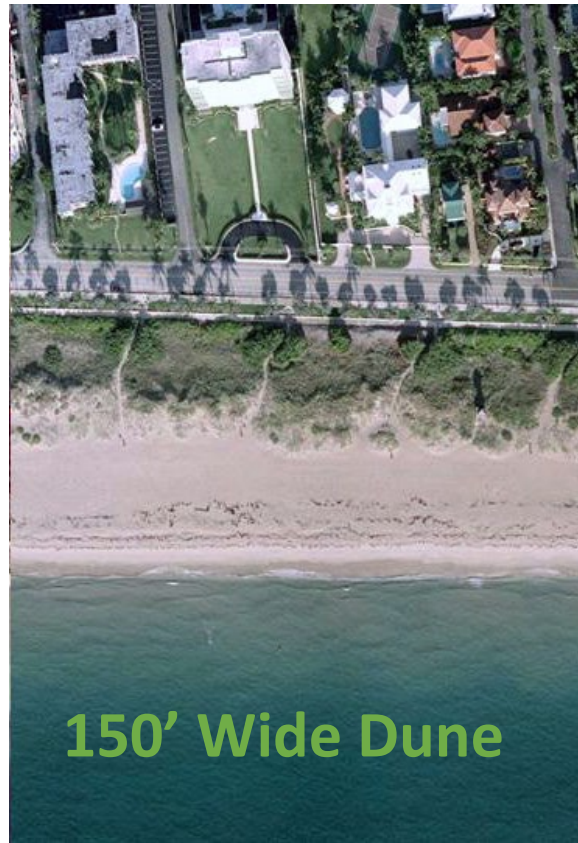
Dune Beginning

1973



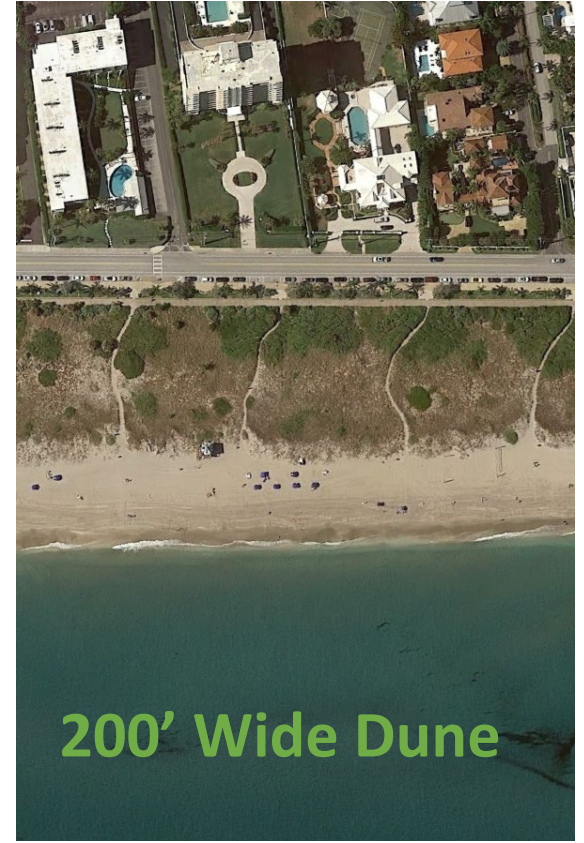
62' Wide Dune

1995



150' Wide Dune

2001



200' Wide Dune

2019

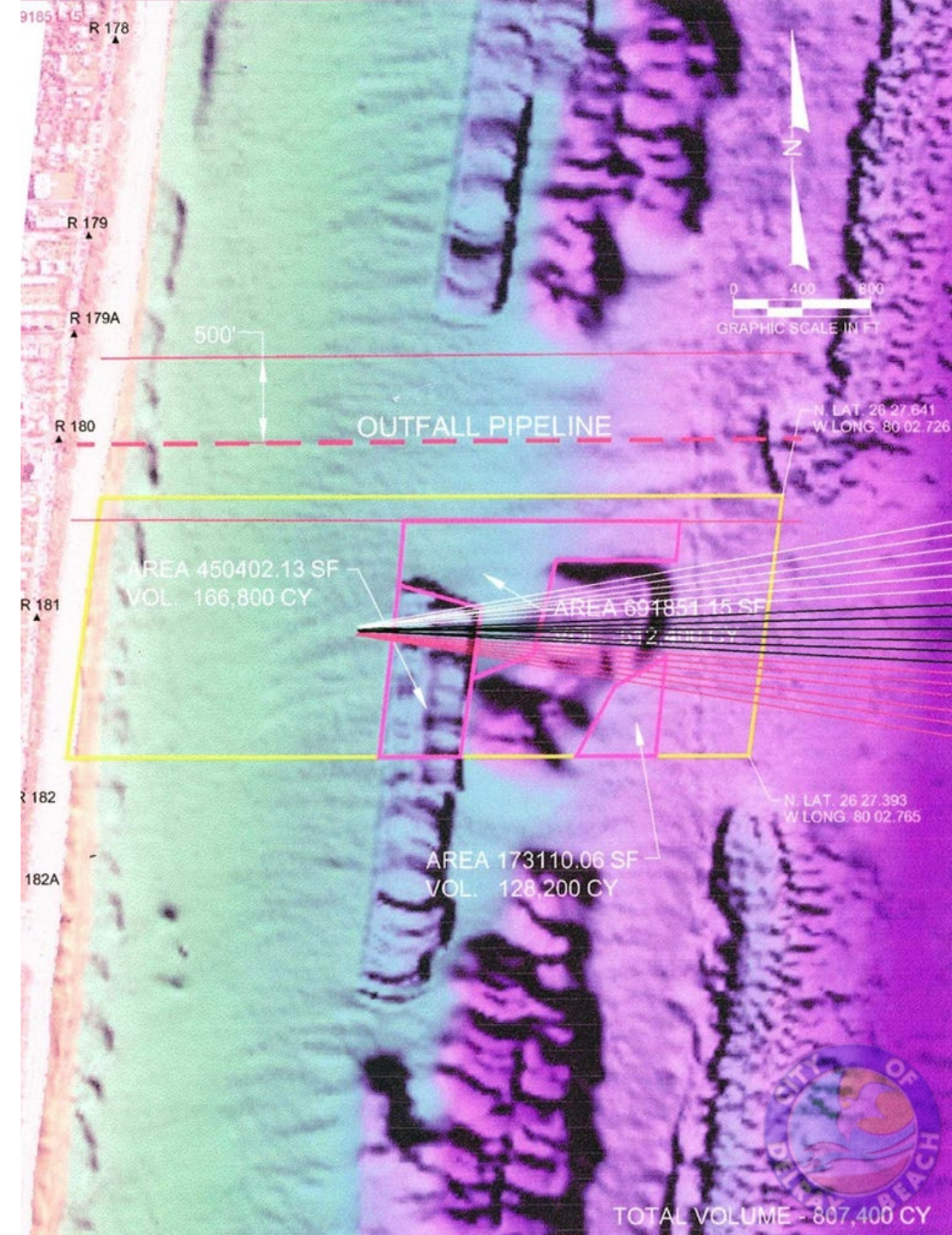
Dune Development

Dune Management



Now and in the future

- Post-construction monitoring (Annually)
 - Beach topographic and bathymetric surveys
- Sea Turtle Nesting Surveys
(Annually from March 1 to October 31)
- Dune Management RFP
- Coastal Habitat Conservation Plan





Future Coastal Habitat Conservation Plan (HCP)

- Coastal Construction Control Line (CCCL) permitting compliance in a means that fully meets the terms of the US Endangered Species Act (ESA)
- Will also serve as an important resource for sustainable coastal development and maintenance.
- Develop a monitoring plan for the habitats, species, and activities covered in the HCP
- Budgeted in Fiscal Year 2022



Beach Cleanup

Who: Anyone wanting to help keep our beaches clean

When: Saturday, September 18
8AM – 10AM

Where: Sandoway
142 S Ocean Boulevard



Delray Beach

**International
Coastal
Cleanup**

September 18

8 AM – 10 AM

Sandoway Discovery Center

A scenic view of a sandy path leading to the ocean at sunset. The path is bordered by wooden posts and white rope, flanked by lush green vegetation. In the distance, a lifeguard stand with a blue roof is visible on the beach. The sun is low on the horizon, creating a warm, golden glow and lens flare effects. A semi-transparent blue banner is overlaid across the middle of the image, containing the text "Thank you and Welcome to Delray!!" in white, bold, sans-serif font.

**Thank you and
Welcome to Delray!!**